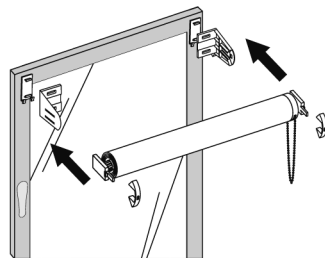
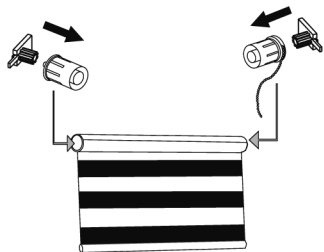
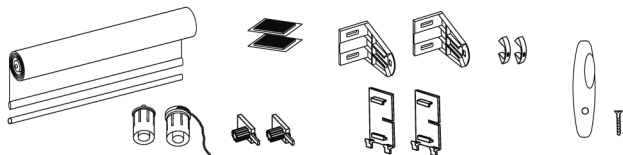
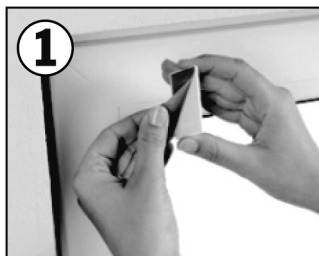
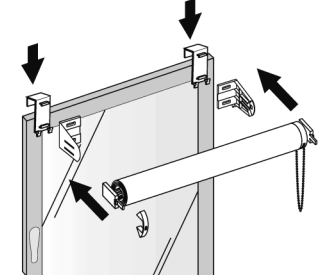
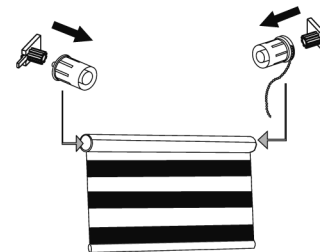
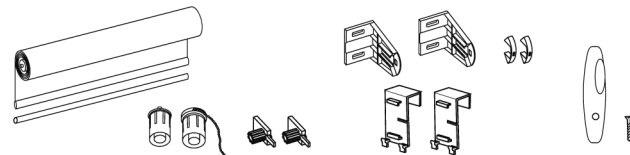
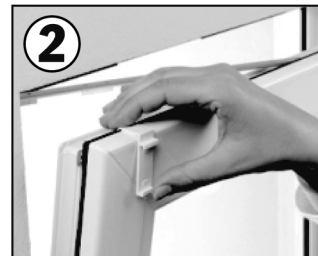
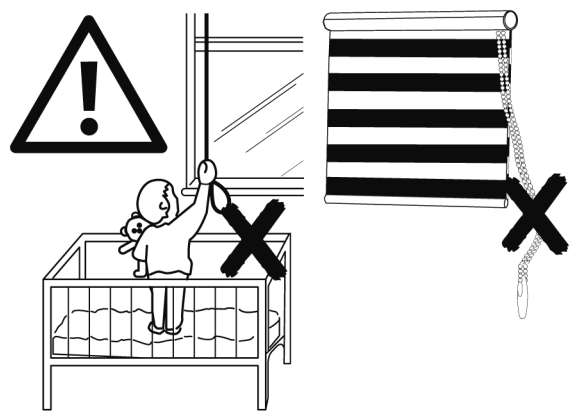
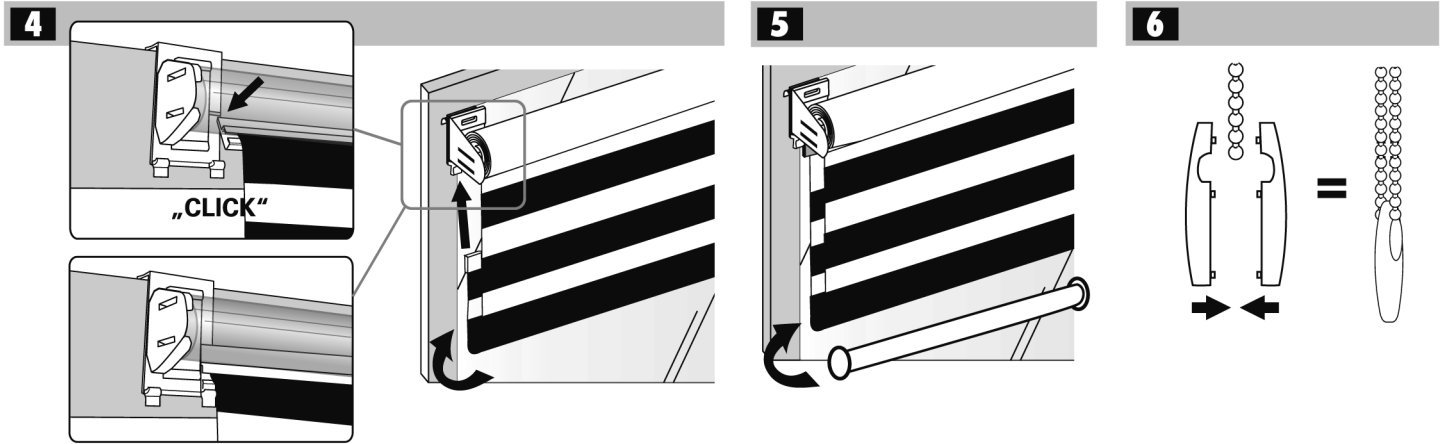


# KLEBEN



# KLEMMEN





**Achtung!** Strangulations-  
gefahr. Schnüre sind aus der  
Reichweite von Kindern zu  
halten, um Strangulierung und  
Verwicklung zu vermeiden.

**Warning!** accidental stran-  
gulation by dangling cords can  
be prevented. To avoid such  
an accident, keep cords out of  
reach of young children.

